

FOUNDATION PLAN
 NORTH
 SCALE: 1/4" = 1'-0"

- NOTES:**
1. ALL NEW SLAB ON GRADE CONSIST OF 4" CONC. SLAB REINFORCED WITH 6x6 W/4x4 UWF OVER EXISTING SLAB. VAPOR BARRIER ON TOP OF SLAB. (SEE DETAIL A-S-1 FOR CONNECTION TO EXISTING SLAB.)
 2. (FIELD VERIFY) ALL NEW 8" BLOCK WALLS AND BLOCK WALL BELOW AND ABOVE WINDOWS FILLED WITH GROUT AND 2" GA. HORIZONTAL REIN. LADDER TYPE AT 16" O.C. SEE TYPICAL REINFORCING MANAGER DETAIL S ON S-9 FOR INTERSECTION TYPICAL ON SLAB EXISTING 8" BLOCK WALLS AND INTERSECTION WITH 8" x 4" O.C. IN CELLS FILLED WITH CONCRETE PER INFORMATION SHOWN IN EXISTING APPROVED DOCUMENTS.)
 3. ALL NEW 8" BLOCK WALLS AND BLOCK WALL BELOW AND ABOVE WINDOWS FILLED WITH GROUT AND 2" GA. HORIZONTAL REIN. LADDER TYPE AT 16" O.C. SEE TYPICAL REINFORCING MANAGER DETAIL S ON S-9 FOR INTERSECTION TYPICAL ON SLAB EXISTING 8" BLOCK WALLS AND INTERSECTION WITH 8" x 4" O.C. IN CELLS FILLED WITH CONCRETE PER INFORMATION SHOWN IN EXISTING APPROVED DOCUMENTS.)
 4. 6" x 12" NEW SLAB REINFORCED WITH 6x6 W/4x4 UWF OVER EXISTING SLAB. VAPOR BARRIER ON TOP OF SLAB. (SEE DETAIL A-S-1 FOR CONNECTION TO EXISTING SLAB.)
 5. 4" NEW SLAB REINFORCED WITH 6x6 W/4x4 UWF OVER EXISTING SLAB. VAPOR BARRIER ON TOP OF SLAB. (SEE DETAIL A-S-1 FOR CONNECTION TO EXISTING SLAB.)
 6. CENTER LINE OF COLUMNS AND WALLS IS FOOTING CENTER LINE (TYPICAL)
 7. SEE STRUCTURAL NOTES AND TYPICAL DETAILS ON S-9
 8. C.B. DIMENSIONS 2' 3" x 4" O.C. x 3'-0" LONG TOP (HOOKED BARS AT TE)
 9. SEE FOOTING SCHEDULE ON S-21 AND COLUMN SCHEDULE ON S-9
 10. COORDINATE ALL DIMENSIONS AND DETAILS WITH ARCHITECTURAL DRAWINGS AND FIELD VERIFY ALL DIMENSIONS PRIOR TO FABRICATION
 11. DRILL 3" x 2'-0" LONG 4" INDO EXISTING FOOTING AND SET IN EPOXY
 12. DRILL 5" x 2'-0" LONG 4" INDO EXISTING FOOTING AND SET IN EPOXY

NO.	DATE	DESCRIPTION

REVISION BOX
 3/24" = 1'-0"
 S-1
 OF
 10

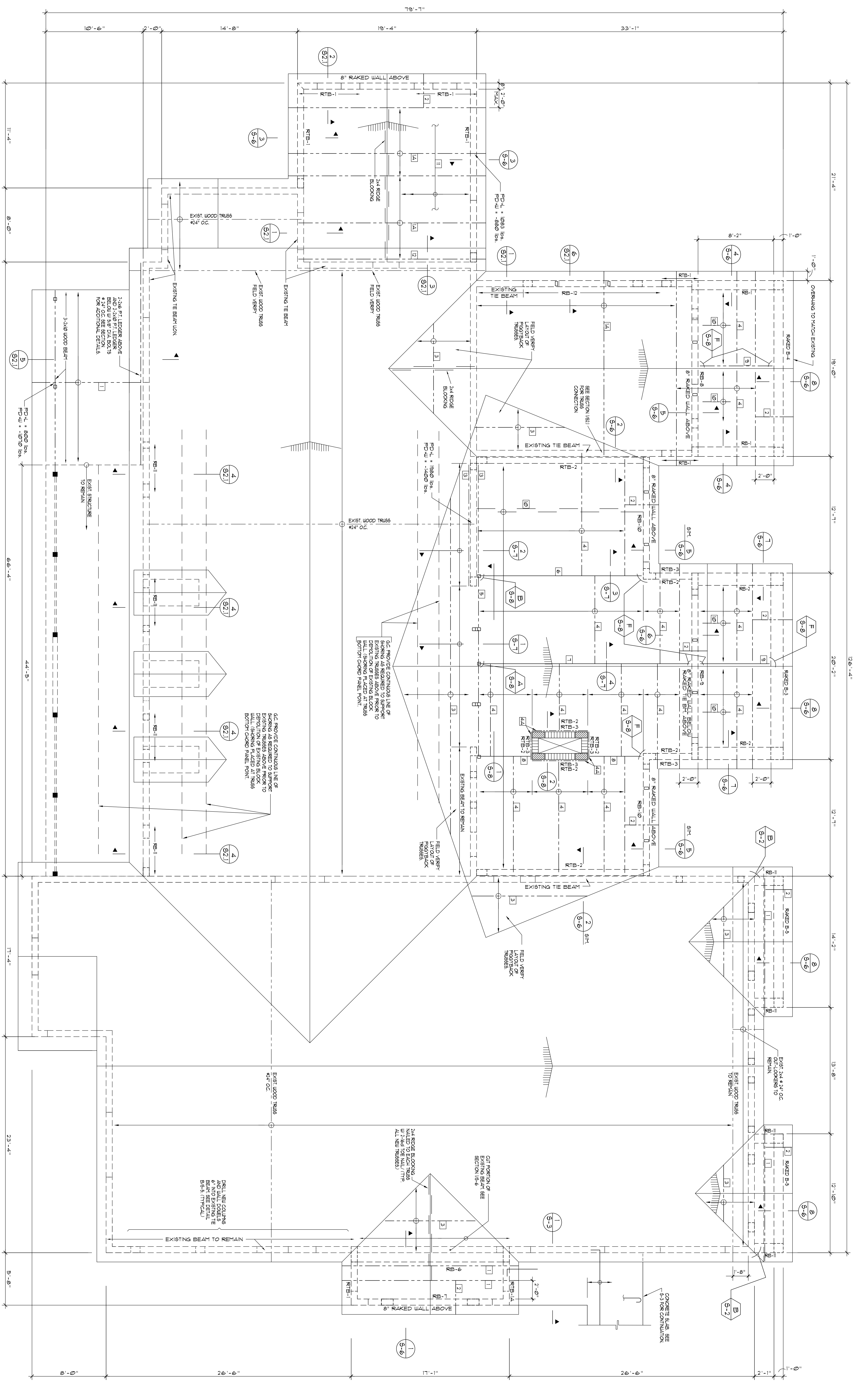
EXPANSION AND REMODELING
HERINGTON RESIDENCE
 10050 WEST SUBURBIAN DRIVE PINECREST FL.

SEAL
 ARMANDO SALAS
 P.E. NO. 38001

JORGE L. VILLAVENCIO
 NO. A5007110

VILLA & ASSOCIATES INC.
 ARCHITECTURE - PLANNING - INTERIOR DESIGN
 7344 SW 48 STREET - MIAMI FL 33155 - (305) 661-8181

CONSULTANT: **BR** BRILL RODRIGUEZ SALAS & ASSOCIATES, INC.
 LAWRENCE E. BRILL PE No. 6398
 ARMANDO SALAS PE No. 38007
 C.A. No. 00005052
 9360 S.W. 25 ST. SUITE 262
 MIAMI, FLORIDA 33173
 PHONE: 305-274-4504
 FAX: 305-273-6575



ROOF FRAMING PLAN

- SCALE: 1/4" = 1'-0"
- ROOF NOTES:
1. NEW SCISSORS WOOD TRUSSES @ 24" O.C. BY TRUSS MANUF. NEEDED TO BRACE EXISTING TRUSSES. TRUSSES TO BE INSTALLED TO TRUSSES JOISTS TRUSSES BLOCKING, P.T. LEADERS AND ADDITIONAL DETAILS * * * O.C. UNLESS OTHERWISE NOTED.
 2. WOOD TRUSSES AND JOIST JOISTS ARE CONCRETE TO NEW ROOF BEAMS UNLESS NOTED OTHERWISE. SEE DETAIL F5-8 FOR TRUSS AND JOIST HANGER AT EACH JOIST. SEE DETAIL F5-9 FOR STEEL BEAM AND COLUMN. SEE ELEVATION DETAIL F5-8 AND SECTION F5-7 FOR ADDITIONAL DETAILS.
 3. ALL TRUSSES AND JOISTS TO BE BRACED TO EACH OTHER AND TO BEAM AND COLUMN. SEE DETAIL F5-8 FOR TRUSS AND JOIST HANGER AT EACH JOIST. SEE DETAIL F5-9 FOR STEEL BEAM AND COLUMN. SEE ELEVATION DETAIL F5-8 AND SECTION F5-7 FOR ADDITIONAL DETAILS.
 4. ALL TRUSSES AND JOISTS TO BE BRACED TO EACH OTHER AND TO BEAM AND COLUMN. SEE DETAIL F5-8 FOR TRUSS AND JOIST HANGER AT EACH JOIST. SEE DETAIL F5-9 FOR STEEL BEAM AND COLUMN. SEE ELEVATION DETAIL F5-8 AND SECTION F5-7 FOR ADDITIONAL DETAILS.
 5. ALL TRUSSES AND JOISTS TO BE BRACED TO EACH OTHER AND TO BEAM AND COLUMN. SEE DETAIL F5-8 FOR TRUSS AND JOIST HANGER AT EACH JOIST. SEE DETAIL F5-9 FOR STEEL BEAM AND COLUMN. SEE ELEVATION DETAIL F5-8 AND SECTION F5-7 FOR ADDITIONAL DETAILS.
 6. ALL TRUSSES AND JOISTS TO BE BRACED TO EACH OTHER AND TO BEAM AND COLUMN. SEE DETAIL F5-8 FOR TRUSS AND JOIST HANGER AT EACH JOIST. SEE DETAIL F5-9 FOR STEEL BEAM AND COLUMN. SEE ELEVATION DETAIL F5-8 AND SECTION F5-7 FOR ADDITIONAL DETAILS.
 7. ALL TRUSSES AND JOISTS TO BE BRACED TO EACH OTHER AND TO BEAM AND COLUMN. SEE DETAIL F5-8 FOR TRUSS AND JOIST HANGER AT EACH JOIST. SEE DETAIL F5-9 FOR STEEL BEAM AND COLUMN. SEE ELEVATION DETAIL F5-8 AND SECTION F5-7 FOR ADDITIONAL DETAILS.

ROOF LEGEND

- 1 - NEW WOOD TRUSSES @ 24" O.C. BY TRUSS MANUF.
- 2 - NEW SCISSORS WOOD TRUSSES @ 24" O.C. BY TRUSS MANUF.
- 3 - 2x6 OUT-LOCKERS @ 16" O.C. AND AT EACH SIDE OF RIDGE
- 4 - PIGGY BACK WOOD TRUSSES @ 24" O.C. BY TRUSS MANUF. SEE DETAIL F5-2
- 5 - 2x10 @ 24" MAX.
- 6 - 2x10 P.T. LEADER WITH 5/8" ANCHOR BOLTS @ 12" ALL AROUND CHIMNEY AND JOIST HANGER AT EACH JOIST. SEE DETAIL F5-8
- 7 - 2x10 P.T. LEADER WITH 5/8" ANCHOR BOLTS @ 12" ALL AROUND CHIMNEY AND JOIST HANGER AT EACH JOIST. SEE DETAIL F5-8
- 8 - 2x10 P.T. LEADER WITH 5/8" ANCHOR BOLTS @ 12" ALL AROUND CHIMNEY AND JOIST HANGER AT EACH JOIST. SEE DETAIL F5-8
- 9 - 2x10 P.T. LEADER WITH 5/8" ANCHOR BOLTS @ 12" ALL AROUND CHIMNEY AND JOIST HANGER AT EACH JOIST. SEE DETAIL F5-8
- 10 - 2x10 P.T. LEADER WITH 5/8" ANCHOR BOLTS @ 12" ALL AROUND CHIMNEY AND JOIST HANGER AT EACH JOIST. SEE DETAIL F5-8
- 11 - 2x10 P.T. LEADER WITH 5/8" ANCHOR BOLTS @ 12" ALL AROUND CHIMNEY AND JOIST HANGER AT EACH JOIST. SEE DETAIL F5-8
- 12 - 2x10 P.T. LEADER WITH 5/8" ANCHOR BOLTS @ 12" ALL AROUND CHIMNEY AND JOIST HANGER AT EACH JOIST. SEE DETAIL F5-8
- 13 - 2x10 P.T. LEADER WITH 5/8" ANCHOR BOLTS @ 12" ALL AROUND CHIMNEY AND JOIST HANGER AT EACH JOIST. SEE DETAIL F5-8



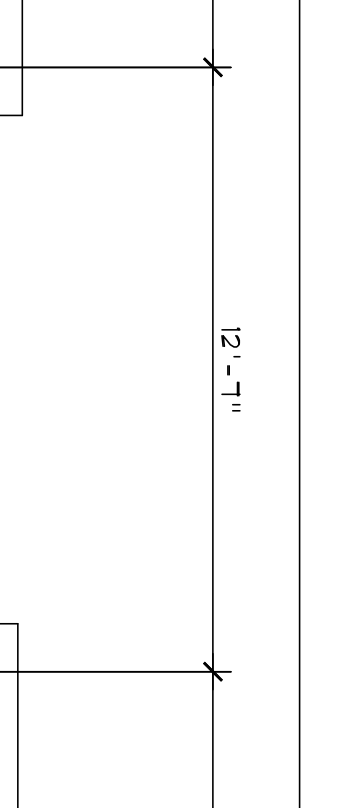
* G.C. NOTE: FIELD VERIFY ALL DIMENSIONS AND ELEVATIONS PRIOR TO FABRICATION.

NO.	DATE	REVISION

EXPANSION AND REMODELING
HERINGTON RESIDENCE
10050 WEST SUBURBIAN DRIVE PINECREST FL.

SEAL
ARMANDO SALAS
P.E. No. 38001

JORGE L. VILLAVICENCIO
NO. A8007110



VILLA & ASSOCIATES INC.
ARCHITECTURE - PLANNING - INTERIOR DESIGN
7344 SW 48 STREET - MIAMI FL 33155 - (305) 661-8181

CONSULTANT: BRILL RODRIGUEZ SALAS & ASSOCIATES, P.A.C.
C.A. No. 00000502
940 S.W. 22 ST. SUITE 262
MIAMI, FLORIDA 33175

LAWRENCE E. BRILL P.E. No. 6385
LUIS M. RODRIGUEZ P.E. No. 22143
ARTHUR SALAS P.E. No. 38007
PHONE: 305-573-8004
FAX: 305-573-6575

S-2
OF
10